

# DLINE<sup>®</sup>

PRODUCTS



**QUICK  
REFERENCE  
GUIDE**

# VALVES

## BALL VALVES

### CARBON STEEL NPT & SW



**1010CR** Series

1000 PSI / REDUCED PORT  
1 PC - WCB BODY  
S.S. BALL  
NACE MR0175  
SIZES: 1/2"- 4"



**1020CF** Series

1000 PSI / FULL PORT  
2 PC - WCB BODY  
S.S. BALL  
NACE MR0175  
SIZES: 1/2"- 4"



**1030CF** Series

1000 PSI / FULL PORT  
3 PC - WCB BODY  
S.S. BALL  
NACE MR0175  
SIZES: 1/2"- 4"



**2010CR** Series

2000 PSI / REDUCED PORT  
1 PC HEX - A-105 BODY  
S.S. BALL  
NACE MR0175  
SIZES: 1/4"- 2"



**2020CF** Series

2000 PSI / FULL PORT  
2 PC - WCB BODY  
S.S. BALL  
NACE MR0175  
SIZES: 1/4"- 2"



**3020CF** Series

3000 PSI / FULL PORT  
2 PC - WCB BODY  
S.S. BALL  
NACE MR0175  
SIZES: 1/4"- 2"

### STAINLESS STEEL NPT & SW



**1010SR** Series

1000 PSI / REDUCED PORT  
1 PC - CF8M BODY  
S.S. BALL  
NACE MR0175  
SIZES: 1/4"- 2"



**1020SF** Series

1000 PSI / FULL PORT  
2 PC - CF8M BODY  
S.S. BALL  
NACE MR0175  
SIZES: 1/2"- 4"



**1030SF** Series

1000 PSI / FULL PORT  
3 PC - CF8M BODY  
S.S. BALL  
NACE MR0175  
SIZES: 1/2"- 4"



**2020SF** Series

2000 PSI / FULL PORT  
2 PC - CF8M BODY  
S.S. BALL  
NACE MR0175  
SIZES: 1/4"- 2"



**3020SF** Series

3000 PSI / FULL PORT  
2 PC - CF8M BODY  
S.S. BALL  
NACE MR0175  
SIZES: 1/4"- 2"

### FLANGED END



**5112FF** Series

**5312FF** Series

**5612FF** Series

FLOATING TYPE  
CLASS 150, 300 & 600  
2 PC - WCB BODY  
S.S. BALL  
FULL PORT / NACE MR0175  
API 6D / API 6FA / API 607  
SIZES: 2"- 10"



**5612TF** Series

TRUNNION TYPE  
CLASS 150, 300, & 600  
2 PC - WCB BODY  
S.S. BALL  
FULL PORT / NACE MR0175  
API 6D / API 6FA / API 607  
SIZES: 2" - 10"

\*OTHER INTERNALS, SIZES & ENDS AVAILABLE UPON REQUEST

# BUTTERFLY VALVES



**4111W** Series

WAFER TYPE / BUNA SEAT  
CLASS 125 / 150  
PLATED DUCTIL IRON DISC  
DUCTILE IRON BODY  
SIZES: 2" - 12"



**4112W** Series

WAFER TYPE / BUNA SEAT  
CLASS 125 / 150  
CF8M DISC  
DUCTILE IRON BODY  
SIZES: 2" - 12"



**4111L** Series

LUG TYPE / BUNA SEAT  
CLASS 125 / 150  
PLATED DUCTIL IRON DISC  
DUCTILE IRON BODY  
SIZES: 2" - 12"



**4112L** Series

LUG TYPE / BUNA SEAT  
CLASS 125 / 150  
CF8M DISC  
DUCTILE IRON BODY  
SIZES: 2" - 12"

*\*OTHER INTERNALS, SIZES & ENDS AVAILABLE UPON REQUEST*

# OIL FIELD VALVES



**BDT** Series

BALL VALVE  
1000/2000 PSI  
2 PC - DUCTILE IRON BODY  
S.S. BALL  
NACE MR0175  
SIZES: 1" FULL PORT  
2" - 4" STANDARD PORT



**BCT** Series

BALL VALVE  
3000/5000 PSI  
2 PC - CARBON STEEL BODY  
S.S. BALL  
NACE MR0175  
SIZES: 2" STANDARD PORT



**CDT** Series

CHECK VALVE  
2000 WOG / VITON SEAT  
DUCTILE IRON BODY  
CF8M DISC  
NACE MR0175  
SIZES: 1" - 4"



**CCT** Series

CHECK VALVE  
3600 - 5000 WOG / VITON SEAT  
CARBON STEEL BODY  
CF8M DISC  
NACE MR0175  
SIZES: 1" - 4"

# CAST STEEL VALVES



**1118F** Series

**1318F** Series

**1618F** Series

GATE VALVE  
CLASS 150, 300 & 600  
CAST STEEL A 216 GR WCB  
TRIM 8 / RF ENDS  
API 600  
SIZES: 2" - 24"



**2118F** Series

**2318F** Series

**2618F** Series

CHECK VALVE  
CLASS 150, 300 & 600  
CAST STEEL A 216 GR WCB  
TRIM 8 / RF ENDS  
BS 1868  
SIZES: 2" - 24"



**3118F** Series

**3318F** Series

**3618F** Series

GLOBE VALVE  
CLASS 150, 300 & 600  
CAST STEEL A 216 GR WCB  
TRIM 8 / RF ENDS  
API 623 (BS 1873)  
SIZES: 2" - 24"

*\*OTHER INTERNALS, SIZES & ENDS AVAILABLE UPON REQUEST*





# FORGED STEEL VALVES



**1828T** Series

GATE VALVE  
CLASS 800  
FORGED STEEL A-105N  
TRIM 8 / NPT ENDS  
API 602 / NACE MR0175  
SIZES: 1/2"-2 1/2" \*



**2828T** Series

CHECK VALVE  
CLASS 800  
FORGED STEEL A-105N  
TRIM 8 / NPT ENDS  
API 602 / NACE MR0175  
SIZES: 1/2"-2" \*



**3828T** Series

GLOBE VALVE  
CLASS 800  
FORGED STEEL A-105N  
TRIM 8 / NPT ENDS  
API 602 / NACE MR0175  
SIZES: 1/2"-2" \*

\*OTHER INTERNALS, SIZES & ENDS AVAILABLE UPON REQUEST

# FLANGES

**BLIND**



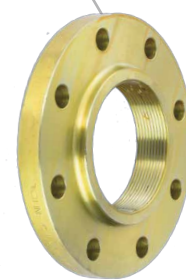
**SLIP ON**



**SOCKET WELD**



**THREADED**



**WELDING NECK**



CLASS 150, 300 & 600  
SA/A-105N BODY  
RF, RTJ / YELLOW COATED  
ANSI B16.5  
SIZES: 1/2" - 54"

# ACCESSORIES



**CG** Type

SPIRAL WOUND GASKET  
CLASS 150, 300 & 600  
OUTER RING: CARBON STEEL  
FILLER: GRAPHITE  
HOOP: SS304 & SS316  
ASTM B16.20  
SIZES: 1/2" - 36"



**CGI** Type

SPIRAL WOUND GASKET  
CLASS 150, 300 & 600  
OUTER RING: CARBON STEEL  
INNER RING: SS304 & SS316  
FILLER: GRAPHITE  
HOOP: SS304 & SS316  
ASTM B16.20  
SIZES: 1/2" - 36"



**B7P** Series

B7-STUDS  
NUTS: ASTM A-194 Gr. 2H  
STUD: ASTM A-193 Gr. B7  
YELLOW ZINC PLATED  
DIAMETER: 1/2" - 1 7/8"  
LENGTH: 2 1/2" - 15 1/2"

# INSTRUMENTATION

## NEEDLE VALVES

### CARBON STEEL



**NC Series**

DELRIN SEAT (6000 PSI)  
METAL SEAT (10000 PSI)  
FxF / MxF - NPT ENDS  
NACE MR0175  
SIZES: 1/4" - 1"



**NBC Series**

BLEED TYPE  
DELRIN SEAT (6000 PSI)  
FxF / MxF - NPT ENDS  
NACE MR0175  
SIZES: 1/4" - 1"



**NAC Series**

ANGLE TYPE  
METAL SEAT (10000 PSI)  
MxF - NPT ENDS  
NACE MR0175  
SIZES: 1/4" - 1/2"



**NMC Series**

MIN TYPE  
DELRIN SEAT (6000 PSI)  
MxF - NPT ENDS  
NACE MR0175  
SIZES: 1/4"



**NPC Series**

MULTI-PORT TYPE  
METAL SEAT (10000 PSI)  
MxF - NPT ENDS  
NACE MR0175  
SIZES: 1/2"

### 316 STAINLESS STEEL



**NS Series**

DELRIN SEAT (6000 PSI)  
METAL SEAT (10000 PSI)  
FxF / MxF - NPT & OD ENDS  
NACE MR0175  
SIZES: 1/4" - 1"



**NBS Series**

BLEED TYPE  
DELRIN SEAT (6000 PSI)  
MxF - NPT ENDS  
NACE MR-0175  
SIZES: 1/4" - 1"



**NAS Series**

ANGLE TYPE  
METAL SEAT (10000 PSI)  
MxF - NPT ENDS  
NACE MR0175  
SIZES: 1/4" - 3/4"



**NMS Series**

MIN TYPE  
DELRIN SEAT (6000 PSI)  
MxF - NPT ENDS  
NACE MR0175  
SIZES: 1/4"



**NPS Series**

MULTI-PORT TYPE  
DELRIN SEAT (6000 PSI)  
METAL SEAT (10000 PSI)  
MxF - NPT ENDS  
NACE MR0175  
SIZES: 1/2"

## MANIFOLD VALVES

### 316 STAINLESS STEEL



**2S Series**

2-VALVE  
METAL SEAT (6000 PSI)  
MxF - NPT ENDS  
VENT: 1/4"  
NACE MR0175  
SIZES: 1/2"

# CHOKES

## CARBON STEEL



**FC-140**

CARBON STEEL BODY  
W/CARBIDE TUNGSTENG  
SIZES: 06/64-48/64



**CAMERON**

CARBON STEEL BODY  
W/CARBIDE TUNGSTENG  
SIZES: 06/64-48/64



**THC 1003 P**

CARBON STEEL BODY  
W/CARBIDE TUNGSTENG  
SIZES: 06/64-48/64



**GRAY 60**

CARBON STEEL BODY  
W/CARBIDE TUNGSTENG  
SIZES: 06/64-48/64



**GRAY 80**

CARBON STEEL BODY  
W/CARBIDE TUNGSTENG  
SIZES: 06/64-48/64

## STAINLESS STEEL



**FC-140**

STAINLESS STEEL BODY  
DRILLED  
SIZES: 50/64-64/64



**CAMERON**

STAINLESS STEEL BODY  
DRILLED  
SIZES: 50/64-64/64



**THC 1003 P**

STAINLESS STEEL BODY  
DRILLED  
SIZES: 50/64-64/64



**GRAY 60**

STAINLESS STEEL BODY  
DRILLED  
SIZES: 50/64-64/64



**GRAY 80**

STAINLESS STEEL BODY  
DRILLED  
SIZES: 50/64-64/64

## REDUCING VALVES



**ADJUSTABLE**

**POSITIVE**

JN-60 CHOKE  
CARBON STEEL BODY  
NPT ENDS  
PORT: 3/4" & 1"  
SIZES: 2"

## ACCESORIES



**NIPPLE**

CARBON STEEL BODY  
NPT ENDS  
PERFORATION SIZES: 06/64-48/64  
SIZE: 2"



# COMING SOON

## TUBE FITTINGS



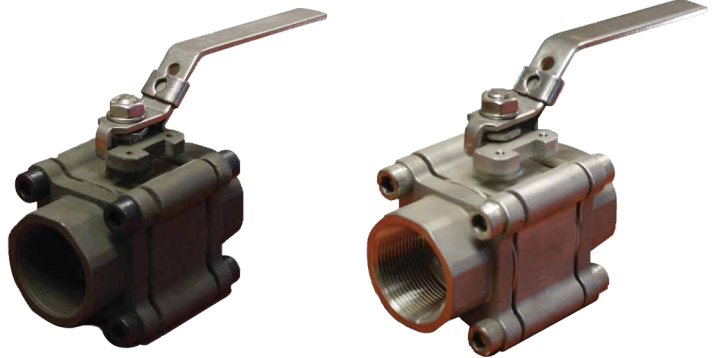
## RING JOINT GASKETS



## BRASS BALL VALVE



## 1530 SERIES



## CAST IRON VALVES



# OUR MISSION:

To constantly innovate our work processes through optimal design, certified manufacture and reliable logistics, in order to guarantee our clients the best quality and the most efficient cost-performance of their investment.



 +52(81)1646-9090  
 [sales@dlineproducts.com](mailto:sales@dlineproducts.com)

[www.dlineproducts.com](http://www.dlineproducts.com)