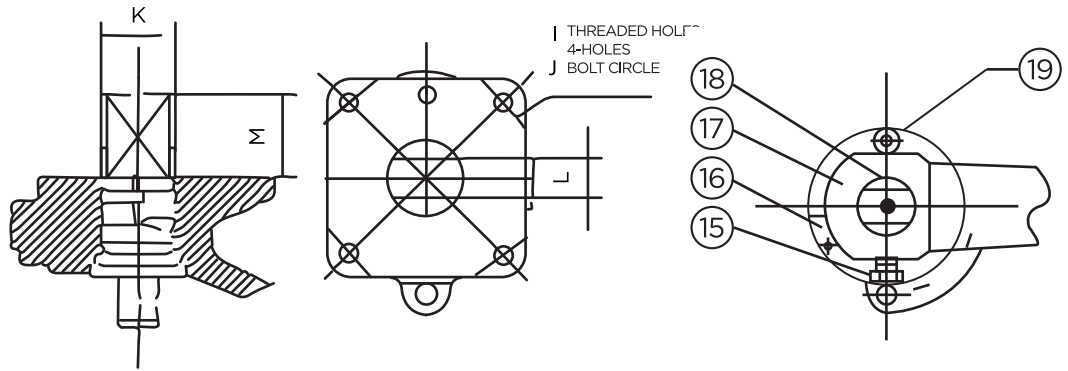


FIG. 5112FF

150 CLASS CARBON STEEL BODY 2 PC FP FLOATING BALL VALVE LEVER OPERATOR



FEATURES

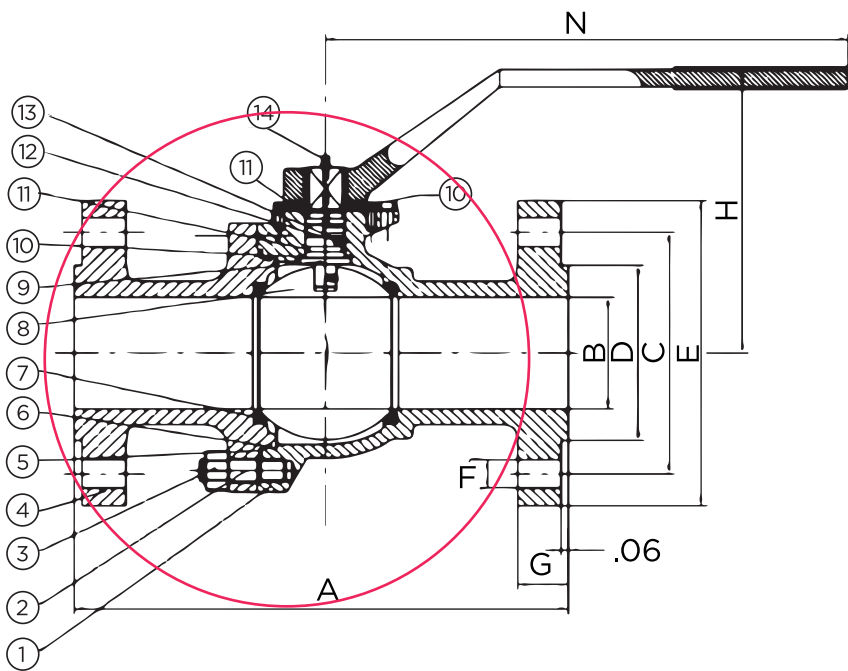
SIZE:	1" - 10"
PORT:	FULL
CLASS:	150
TEMPERATURE:	- 49 TO 450 F°
CONNECTION:	FLANGED RF

TEST SPECIFICATION

TEST ACCORDANCE TO PER	API 598
NOMINAL PRESSURE:	285 PSI
SHELL TEST (WATER):	450 PSI
SEAT TEST (WATER):	315 PSI
AIR TEST:	80.80 PSI

MATERIAL LIST

1	BODY	ASTM A351 Gr. CF8M
2	SEAT	DELRIN
3	BALL	SS316
4	O-RING	VITON
5	BODY SEAL	GRAPHITE
6	CAP	ASTM A351 Gr. CF8M
7	STEM	SS316
8	THRUST WASHER	15% GLASS FILLED PTFE (RPTFE)
9	STEM PACKING	CARBON FILLED PTFE (CPTFE)
10	GLAND BUSHING	A2-70
11	PIN COVER	SS304
12	PIN NUT	ASTM A193 Gr. B7
13	HANDLE	SS201
14	HANDLE WASHER	65Mn
15	HANDLE NUT	A2-70
16	HANDLE COVER	PVC
17	HANDLE	DUCTIL IRON
18	RETAINER	CARBON STEEL
19	STOP SCREW	CARBON STEEL



*DIMENSIONS ARE EXPRESSED IN INCHES

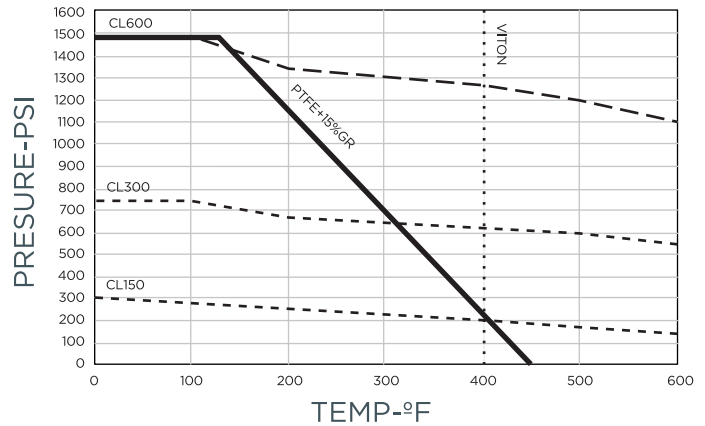
FIG. 5112FF

150 CLASS CARBON STEEL BODY 2 PC FP FLOATING BALL VALVE LEVER OPERATOR

TECHNICAL SPECIFICATION

- BLOW-OUT-PROOF STEM DESIGN
- VALVE DESIGN TO PER API 6D
- PRESSURE-TEMPERATURE TO PER ASME B16.34 RATINGS
- FACE TO FACE TO PER ASME B16.10
- FLANGE DIMENSIONS TO PER ASME B16.5
- SPLIT BODY TO PER BS5351
- LOCKING HANDLE WITH LEVER OR GO
- IN COMPLIANCE WITH NACE MR-0175
- ANTISTATIC GROUNDING BETWEEN BALL, STEM & BODY
- ISO 5211 ACTUATOR MOUNTING PAD
- FIRE TESTED TO PER API 6FA

PRESSURE TEMPERATURE RATINGS



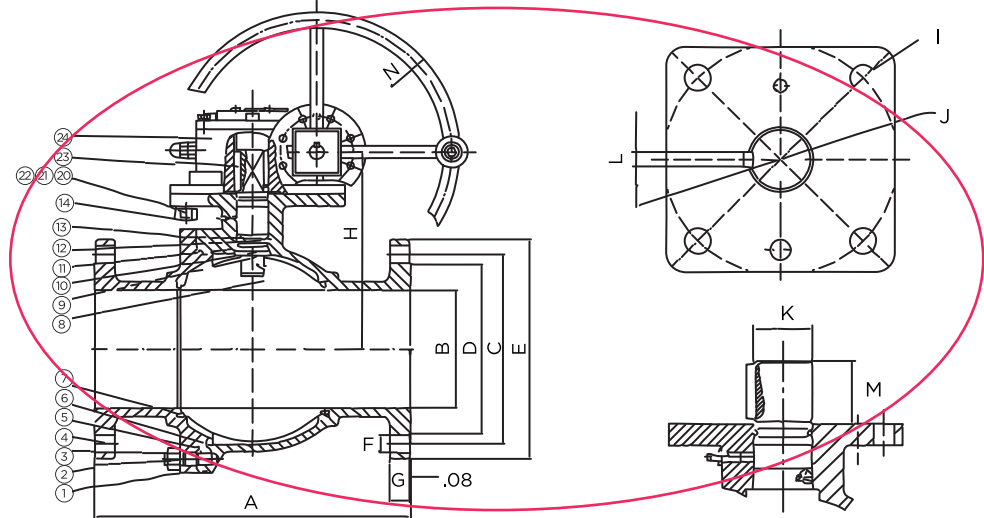
CAMBIAR

DIMENSIONS, WEIGHT & TORQUE

MODEL	SIZE	A	B	C	D	E	F	G	H	I	J	K	L	M	N	TORQUE (FT.LB)	WEIGHT (KG)
5112FF-06	1"	5.00	1.00	3.13	2.01	4.33	4-0.63	0.44	4.27	M6	1.80	0.63	0.37	0.95	6.20	11.00	4.09
5112FF-09	2"	7.00	1.93	4.75	3.62	6.00	4-0.75	0.73	5.91	1/4-20	1.75	0.86	0.55	0.98	12.00	50.00	26.50
5112FF-10	2 1/2"	7.52	2.56	5.50	4.13	7.09	4-0.75	0.71	6.32	1/4-20	1.75	0.86	0.55	0.98	12.00	70.00	33.10
5112FF-11	3"	8.00	2.91	6.00	5.00	7.50	4-0.75	0.87	6.88	5/16-18	2.75	1.24	0.87	1.34	14.00	90.00	46.30
5112FF-12	4"	9.00	3.94	7.50	6.18	9.00	8-0.75	0.94	9.11	3/8-16	4.00	1.37	0.95	1.56	21.70	130.00	77.20
5112FF-13	5"	14.02	4.92	8.50	7.32	10.04	8-0.88	0.96	10.83	0.55	4.92	1.37	0.95	1.47	25.60	200.00	105.00
5112FF-14	6"	15.50	5.91	9.50	8.50	10.98	8-0.88	1.00	12.52	0.71	6.50	1.58	1.06	2.19	31.50	625.00	145.50
5112FF-15	8"	18.00	7.91	11.75	10.63	13.58	8-0.88	1.13	14.37	0.87	6.50	1.97	1.42	2.36	39.40	1000.00	220.50
5112FF-16	10"	20.98	9.92	14.25	12.76	15.94	12-1.00	1.20	16.34	0.87	6.50	1.97	1.42	2.36	76.60	1916.00	473.10

FIG. 5112FF

150 CLASS CARBON STEEL BODY 2 PC FP BALL VALVE GEAR OPERATOR



FEATURES

SIZE:	6" - 10"
PORT:	FULL
CLASS:	150
TEMPERATURE:	-49 TO 450 F°
CONNECTION:	FLANGED RF

TEST SPECIFICATION

TEST ACCORDANCE TO PER	API 598
NOMINAL PRESSURE:	285 PSI
SHELL TEST (WATER):	450 PSI
SEAT TEST (WATER):	315 PSI
AIR TEST:	80.80 PSI

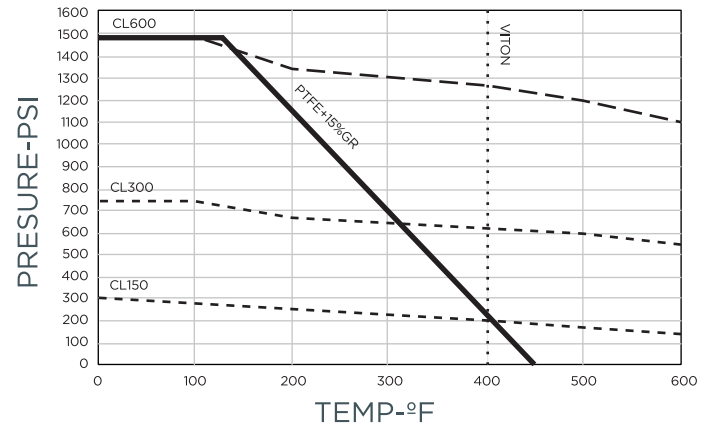
TECHNICAL SPECIFICATION

- BLOW-OUT-PROOF STEM DESIGN
- VALVE DESIGN TO PER API 6D
- PRESSURE-TEMPERATURE TO PER ASME B16.34 RATINGS
- FACE TO FACE TO PER ASME B16.10
- FLANGE DIMENSIONS TO PER ASME B16.5
- SPLIT BODY TO PER BS5351
- LOCKING HANDLE WITH LEVER OR GO
- IN COMPLIANCE WITH NACE MR-0175
- ANTISTATIC GROUNDING BETWEEN BALL, STEM & BODY
- ISO 5211 ACTUATOR MOUNTING PAD
- FIRE TESTED TO PER API 6FA

MATERIAL LIST

1	BODY	ASTM A-216 Gr. WCB
2	STUD	ASTM A-193 Gr. B7
3	NUT	ASTM A-194 Gr. 2H
4	ADAPTER CAP	ASTM A-216 Gr. WCB
5	GASKET BODY	SS304 + GRAPHITE
6	O-RING BODY	VITON
7	SEAT	PTFE + 15% GRAPHITE FILLED
8	BALL	SS316
9	STEM	SS316
10	STEM GASKET	PTFE
11	O-RING STEM	VITON
12	ANTISTATIC STEEL BALL	SS304
13	ANTISTATIC SPRING	SS304
14	GREASE ZERK	CARBON STEEL
20	STUD	AISI 1035
21	NUT	AISI 1045
22	SPRING WASHER	AISI 1065
23	STEM KEY	AISI 1045
24	GEAR OPERATOR	CAST IRON

PRESSURE TEMPERATURE RATINGS



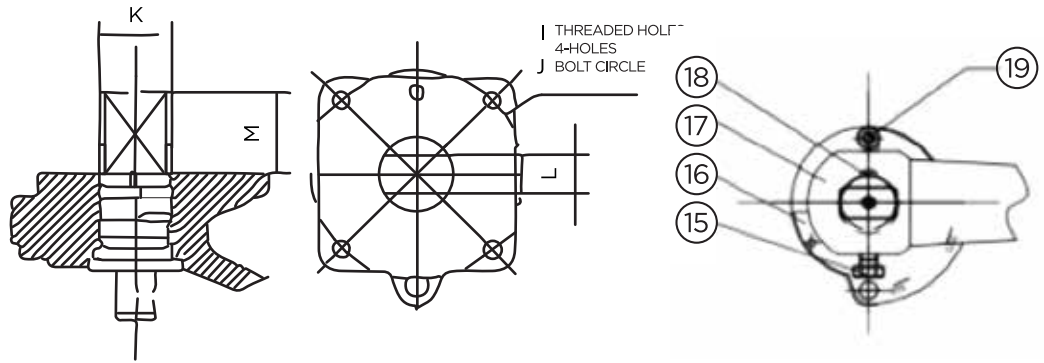
DIMENSIONS, WEIGHT & TORQUE

MODEL	SIZE	A	B	C	D	E	F	G	H	I	J	K	L	M	N	TORQUE (FT.LB)	WEIGHT (KG)
5112FF-14G	6"	15.50	5.91	9.50	8.50	10.98	8-0.88	1.00	9.88	4-0.71	6.50	1.58	0.47	2.19	17.99	625.00	79.90
5112FF-15G	8"	18.00	7.91	11.75	10.63	13.58	8-0.88	1.13	11.61	4-0.86	6.50	1.97	0.55	2.36	17.99	1000.00	114.64
5112FF-16G	10"	20.98	9.92	14.25	12.76	15.94	12-1.02	1.20	13.58	4-0.86	6.50	1.97	0.55	2.36	23.62	1916.00	202.03

*DIMENSIONS ARE EXPRESSED IN INCHES

FIG. 5312FF

300 CLASS CARBON STEEL BODY 2 PC FP FLOATING BALL VALVE LEVER



FEATURES

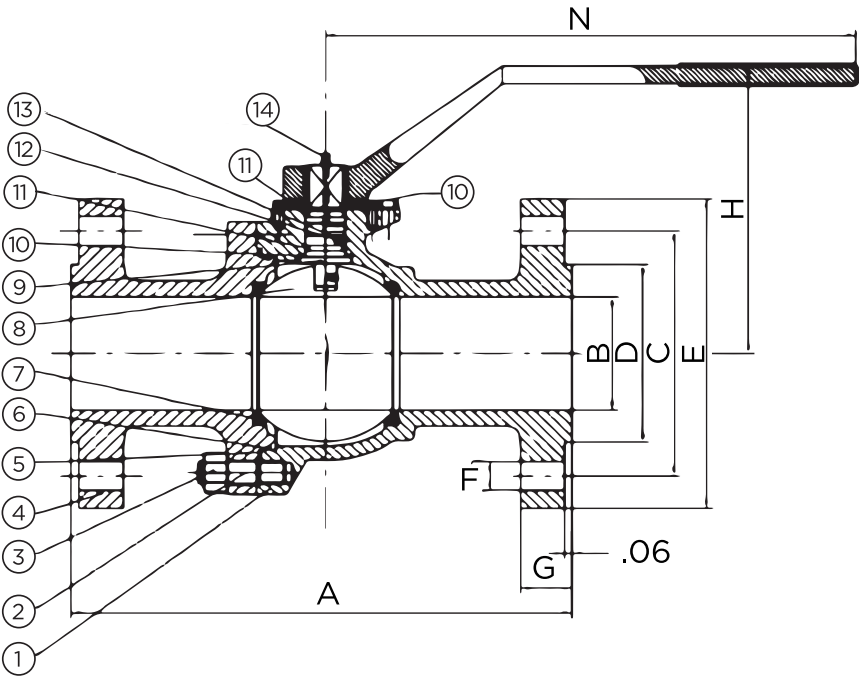
SIZE:	2" - 8"
PORT:	FULL
CLASS:	300
TEMPERATURE:	-49 TO 500 F°
CONNECTION:	FLANGED RF

TEST SPECIFICATION

TEST ACCORDANCE TO PER	API 598
NOMINAL PRESSURE:	740 PSI
SHELL TEST (WATER):	1125 PSI
SEAT TEST (WATER):	815 PSI
AIR TEST:	80.80 PSI

MATERIAL LIST

ITEM #	DESCRIPTION	MATERIAL
1	BODY	ASTM A-216 Gr. WCB
2	STUD	ASTM A-193 Gr. B7
3	NUT	ASTM A-194 Gr. 2H
4	ADAPTER CAP	ASTM A-216 Gr. WCB
5	GASKET BODY	SS304 + GRAPHITE
6	O-RING BODY	VITON
7	SEAT	PTFE + CARBON FILLED
8	BALL	SS316
9	STEM	SS316
10	STEM GASKET	PTFE
11	O-RING STEM	VITON
12	ANTISTATIC STEEL BALL	SS304
13	ANTISTATIC SPRING	SS304
14	GREASE ZERK	CARBON STEEL
15	HANDLE SCREW	CARBON STEEL
16	STOP PLATE	CARBON STEEL + ZINC
17	HANDLE	DUCTIL IRON
18	RETAINER	CARBON STEEL
19	STOP SCREW	CARBON STEEL



*DIMENSIONS ARE EXPRESSED IN INCHES

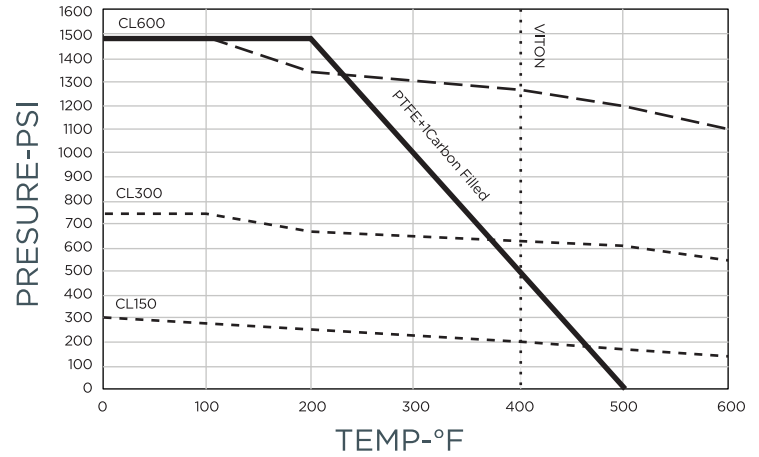
FIG. 5312FF

300 CLASS CARBON STEEL BODY 2 PC FP FLOATING BALL VALVE LEVER

TECHNICAL SPECIFICATION

- BLOW-OUT-PROOF STEM DESIGN
- VALVE DESIGN TO PER API 6D
- PRESSURE-TEMPERATURE TO PER ASME B16.34 RATINGS
- FACE TO FACE TO PER ASME B16.10
- FLANGE DIMENSIONS TO PER ASME B16.5
- SPLIT BODY TO PER BS5351
- LOCKING HANDLE WITH LEVER OR GO
- IN COMPLIANCE WITH NACE MR-0175
- ANTISTATIC GROUNDING BETWEEN BALL, STEM & BODY
- ISO 5211 ACTUATOR MOUNTING PAD
- FIRE TESTED TO PER API 6FA

PRESSURE TEMPERATURE RATINGS

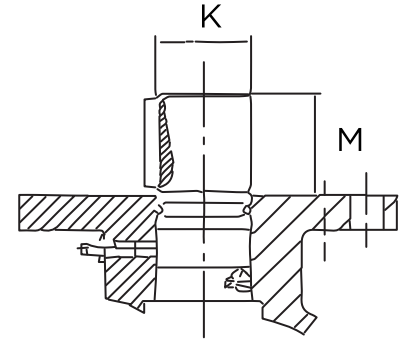
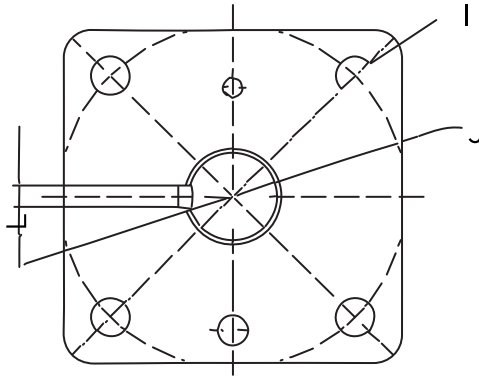


DIMENSIONS, WEIGHT & TORQUE

MODEL	SIZE	A	B	C	D	E	F	G	H	I	J	K	L	M	N	TORQUE (FT.LB)	WEIGHT (KG)
5312FF-09	2"	8.50	1.93	5.00	3.62	6.50	8-0.75	0.88	5.91	1/4-20	1.75	0.87	0.55	0.98	12.00	60.00	15.03
5312FF-10	2 1/2"	9.50	2.56	5.87	4.13	7.48	8-0.88	1.02	6.32	1/4-20	1.75	0.86	0.55	0.98	12.00	110.00	19.52
5312FF-11	3"	11.14	2.91	6.63	5.00	8.27	8-0.87	1.13	6.88	5/16-18	2.75	1.24	0.87	1.34	20.00	140.00	32.00
5312FF-12	4"	12.01	3.94	7.87	6.18	10.00	8-0.87	1.25	9.11	3/8-16	4.00	1.37	0.95	1.56	21.70	180.00	48.03
5312FF-14	6"	15.87	5.91	10.63	8.50	12.52	12-0.88	1.44	12.52	0.71	6.50	1.58	1.06	2.19	31.50	1000.00	87.08
5312FF-15	8"	19.76	7.91	13.00	10.63	14.96	12-1.02	1.64	14.37	0.87	6.50	1.97	1.42	2.36	56.90	2250.00	145.14

FIG. 5312FF

300 CLASS CARBON STEEL BODY 2 PC FP FLOATING BALL VALVE GEAR OPERATOR



FEATURES

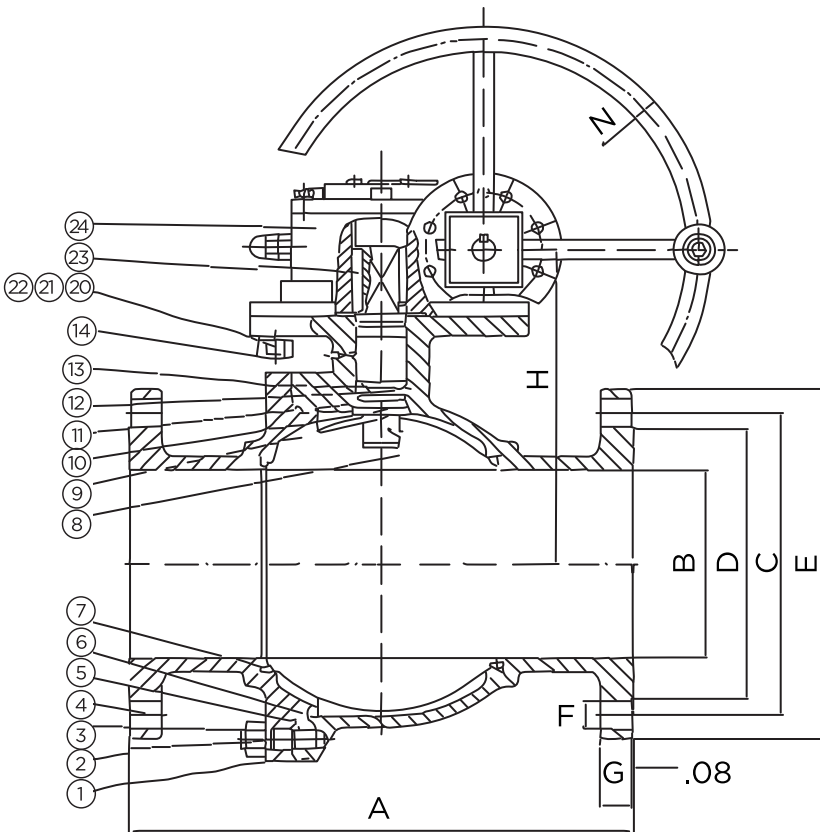
SIZE:	6" & 8"
PORT:	FULL
CLASS:	300
TEMPERATURE:	-49 TO 500 F°
CONNECTION:	FLANGED RF

TEST SPECIFICATION

TEST ACCORDANCE TO PER	API 598
NOMINAL PRESSURE:	740 PSI
SHELL TEST (WATER):	1125 PSI
SEAT TEST (WATER):	815 PSI
AIR TEST:	80.80 PSI

TECHNICAL SPECIFICATION

- BLOW-OUT-PROOF STEM DESIGN
- VALVE DESIGN TO PER API 6D
- PRESSURE-TEMPERATURE TO PER ASME B16.34 RATINGS
- FACE TO FACE TO PER ASME B16.10
- FLANGE DIMENSIONS TO PER ASME B16.5
- SPLIT BODY TO PER BS5351
- LOCKING HANDLE WITH LEVER OR GO
- IN COMPLIANCE WITH NACE MR-0175
- ANTISTATIC GROUNDING BETWEEN BALL, STEM & BODY
- ISO 5211 ACTUATOR MOUNTING PAD
- FIRE TESTED TO PER API 6FA



*DIMENSIONS ARE EXPRESSED IN INCHES

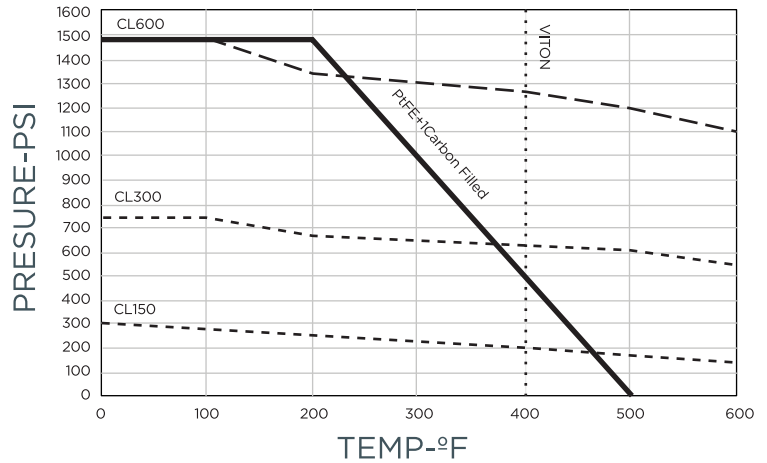
FIG. 5312FF

300 CLASS CARBON STEEL BODY 2 PC FP FLOATING BALL VALVE GEAR OPERATOR

MATERIAL LIST

1	BODY	ASTM A-216 Gr. WCB
2	STUD	ASTM A-193 Gr. B7
3	NUT	ASTM A-194 Gr. 2H
4	ADAPTER CAP	ASTM A-216 Gr. WCB
5	GASKET BODY	SS304 + GRAPHITE
6	O-RING BODY	VITON
7	SEAT	PTFE + CARBON FILLED
8	BALL	SS316
9	STEM	SS316
10	STEM GASKET	PTFE
11	O-RING STEM	VITON
12	ANTISTATIC STEEL BALL	SS304
13	ANTISTATIC SPRING	SS304
14	GREASE ZERK	CARBON STEEL
20	STUD	AISI 1035
21	NUT	AISI 1045
22	SPRING WASHER	AISI 1065
23	STEM KEY	AISI 1045
24	GEAR OPERATOR	CAST IRON

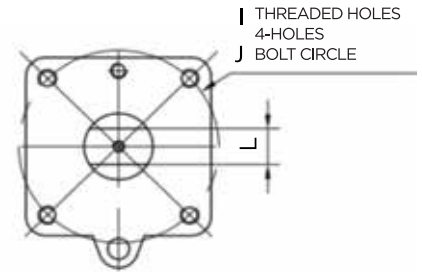
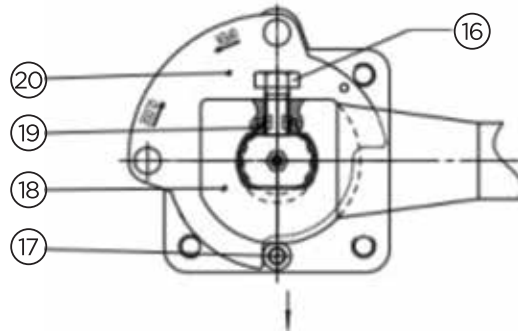
PRESSURE TEMPERATURE RATINGS



DIMENSIONS, WEIGHT & TORQUE

MODEL	SIZE	A	B	C	D	E	F	G	H	I	J	K	L	M	N	TORQUE (FT.LB)	WEIGHT (KG)
5112FF-14G	6"	15.87	5.91	10.63	8.50	12.52	12-0.88	1.44	9.88	4-0.71	6.50	1.58	0.47	2.19	17.99	1000.00	100.33
5112FF-15G	8"	19.76	7.91	13.00	10.63	14.96	12-1.02	1.64	11.61	4-0.86	6.50	1.97	0.55	2.36	23.62	2250.00	171.34

600 CLASS CARBON STEEL BODY 2 PC FP FLOATING BALL VALVE LEVER OPERATOR



FEATURES

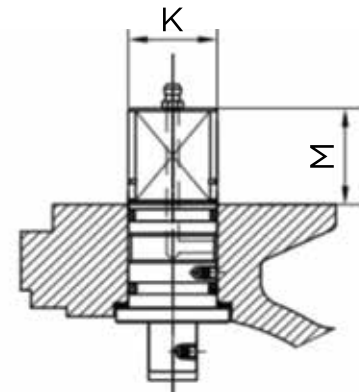
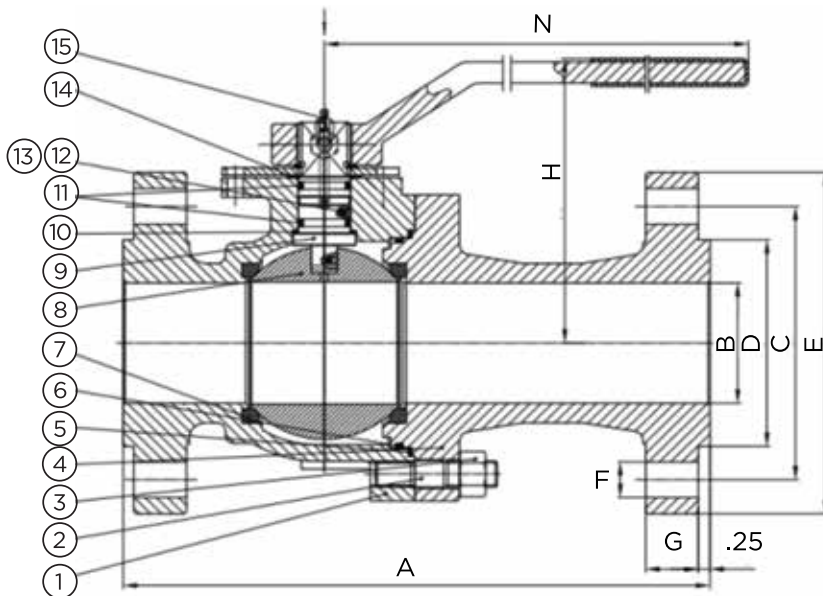
SIZE:	1" - 4"
PORT:	FULL
CLASS:	600
TEMPERATURE:	-18 TO 392 F°
CONNECTION:	FLANGED RF

TEST SPECIFICATION

TEST ACCORDANCE TO PER	API 598
NOMINAL PRESSURE:	1480 PSI
SHELL TEST (WATER):	2225 PSI
SEAT TEST (WATER):	1630 PSI
AIR TEST:	80.80 PSI

TECHNICAL SPECIFICATION

- BLOW-OUT-PROOF STEM DESIGN
- VALVE DESIGN TO PER API 6D
- PRESSURE-TEMPERATURE TO PER ASME B16.34 RATINGS
- FACE TO FACE TO PER ASME B16.10
- FLANGE DIMENSIONS TO PER ASME B16.5
- SPLIT BODY TO PER BS5351
- LOCKING HANDLE WITH LEVER OR GO
- IN COMPLIANCE WITH NACE MR-0175
- ANTISTATIC GROUNDING BETWEEN BALL, STEM & BODY
- ISO 5211 ACTUATOR MOUNTING PAD
- FIRE TESTED TO PER API 6FA



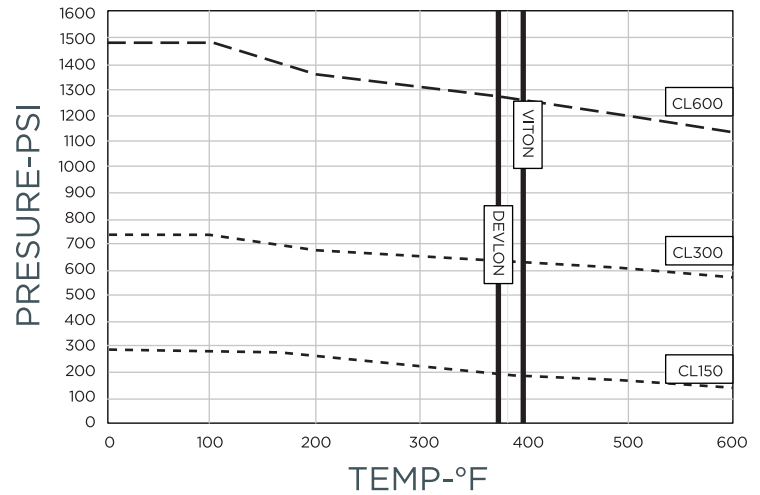
*FOR DIMENSION A THERE IS A TOLERANCE OF .08 IN, FOR G .04 IN
*DIMENSIONES ARE EXPRESSED IN INCHES

600 CLASS CARBON STEEL BODY 2 PC FP FLOATING BALL VALVE LEVER OPERATOR

MATERIAL LIST

1	BODY	ASTM A-216 Gr. WCB
2	STUD	ASTM A-193 Gr. B7
3	NUT	ASTM A-194 Gr. 2H
4	ADAPTER CAP	ASTM A-216 Gr. WCB
5	GASKET BODY	SS304 + GRAPHITE
6	O-RING BODY	VITON
7	SEAT	DEVLON
8	BALL	SS316
9	STEM	SS316
10	STEM GASKET	PTFE
11	O-RING STEM	VITON
12	ANTISTATIC SPRING	SS304
13	ANTISTATIC STEEL BALL	SS304
14	GASKET	PTFE
15	GREASE ZERK	CARBON STEEL
16	HANDLE SCREW	CARBON STEEL
17	STOP SCREW	CARBON STEEL
18	HANDLE	DUCTILE IRON
19	SNAP RING	SPRING STEEL
20	STOP PLATE	CARBON STEEL + ZINC

PRESSURE TEMPERATURE RATINGS



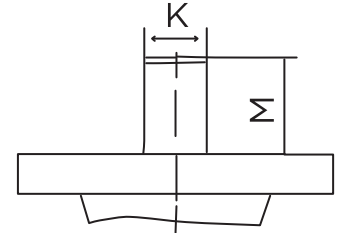
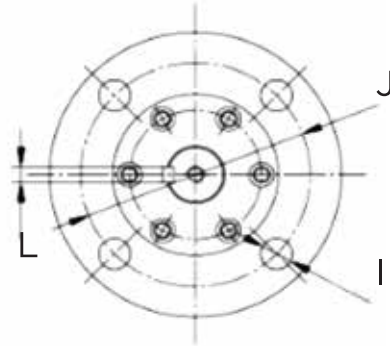
DIMENSIONS, WEIGHT & TORQUE

MODEL	SIZE	A	B	C	D	E	F	G	H	I	J	K	L	M	N	TORQUE (FT.LB)	WEIGHT (KG)
5612FF-06	1"	8.50	1.00	3.50	2.00	4.87	4-0.75	0.71	4.27	M6	1.80	0.63	0.37	0.95	6.22	25.00	7.26
5612FF-09	2"	11.50	1.93	2.00	3.63	6.50	8-0.75	1.00	5.91	1/4-20	1.75	0.87	0.55	0.98	12.00	100.00	20.11
5612FF-11	3"	14.00	2.91	6.64	5.00	8.27	8-0.88	1.25	6.88	3/8-16	4.00	1.24	0.87	1.34	20.00	180.00	39.50
5612FF-12	4"	17.00	3.94	8.50	6.18	10.75	8-1.00	1.50	9.11	3/8-16	4.24	1.37	0.95	1.56	31.50	240.00	72.05

*FOR DIMENSION A THERE IS A TOLERANCE OF .08 IN, FOR G .04 IN
 *DIMENSIONES ARE EXPRESSED IN INCHES

FIG. 5612FT

600 CLASS CS BODY 2 PC FP TRUNNION BALL VALVE GEAR OPERATOR



FEATURES

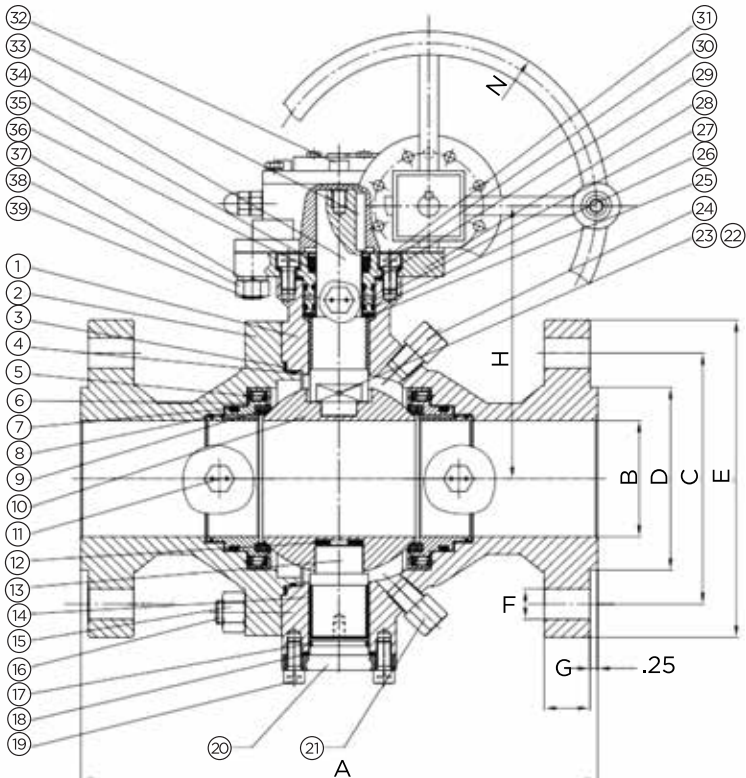
SIZE: 4" - 12"
 PORT: FULL
 CLASS: 600
 TEMPERATURE: -49 TO 500 F°
 CONNECTION: FLANGED RF

TEST SPECIFICATION

TEST ACCORDANCE TO PER API 598
 NOMINAL PRESSURE: 1480 PSI
 SHELL TEST (WATER): 2225 PSI
 SEAT TEST (WATER): 1630 PSI
 AIR TEST: 80.80 PSI

TECHNICAL SPECIFICATION

BLOW-OUT-PROOF STEM DESIGN
 VALVE DESIGN TO PER API 6D
 PRESSURE-TEMPERATURE TO PER ASME B16.34 RATINGS
 FACE TO FACE TO PER ASME B16.10
 FLANGE DIMENSIONS TO PER ASME B16.5
 SPLIT BODY TO PER BS5351
 LOCKING HANDLE WITH LEVER OR GO
 IN COMPLIANCE WITH NACE MR-0175
 ANTISTATIC GROUNDING BETWEEN BALL, STEM & BODY
 FIRE TESTED TO PER API 6FA
 EMERGENCY SEAT SEALANT INJECTION STANDARD ON 6" & LARGER
 DOUBLE BLOCK & BLEED
 8" & LARGER ARE EQUIPPED WITH LIFTING LUGS



*DIMENSIONS ARE EXPRESSED IN INCHES

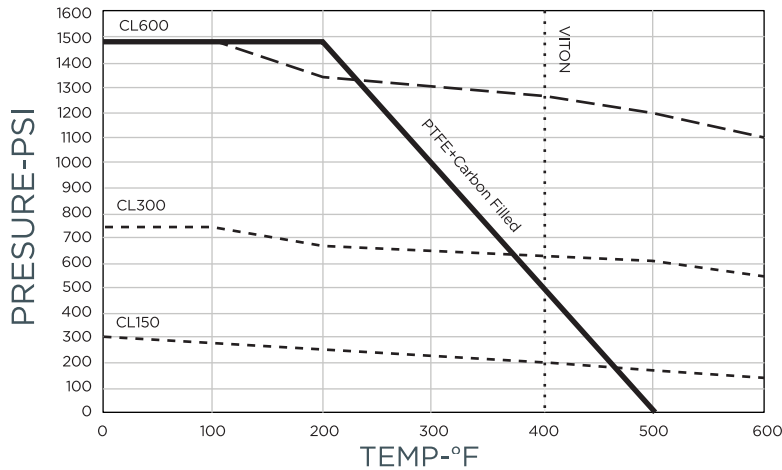
FIG. 5612FT

600 CLASS CS BODY 2 PC FP TRUNNION BALL VALVE GEAR OPERATOR

MATERIAL LIST

1	BODY	ASTM A-216 Gr. WCB	21	BODY VENT VALVE	ASTM A-105
2	ADAPTER CAP	ASTM A-216 Gr. WCB	22	ANTISTATIC STEEL BALL	SS304
3	GASKET BODY	SS304+GRAPHITE	23	ANTISTATIC SPRING	SS304
4	O-RING BODY	VITON	24	DRAIN FITTING VALVE	ASTM A-105
5	SPRING	17-7PH	25	GASKET	PTFE+CARBON FILLER
6	SEAT RING	ASTM A-182 Gr. 316	26	GLAND PLATE O-RING	VITON
7	O-RING SEAT	VITON	27	O-RING STEM	VITON
8	SEAT FIRE SAFE	GRAPHITE	28	UPPER COVER	AISI 1045
9	SEAT ASSEMBLY	PTFE+CARBON FILLER	29	GASKET BODY	SS304+GRAPHITE
10	BALL	ASTM A-276 Gr. 316	30	SPRING WASHER	AISI 1065
11	GREASE VALVE	ASTM A-105	31	CAP SCREW	ASMT A-193 Gr. B7
12	GASKET	PTFE+CARBON FILLER	32	GEAR OPERATOR	CAST IRON CASE
13	TRUNNION	ASTM A-276 Gr. 316	33	STEM KEY	AISI 1045
14	TRUNNION BEARING	SS304+PTFE	34	UPPER STEM	ASTM A-276 Gr. 316
15	NUT	ASTM A-194 Gr. 2H	35	GLAND FLANGE	SS410
16	STUD	ASTM A-193 Gr- B7	36	GLAND PACKING	GRAPHITE
17	O-RING TRUNNION	VITON	37	SPRING WASHER	AISI 1065
18	GASKET TRUNNION	SS304+GRAPHITE	38	NUT	ASTM A-194 Gr. 2H
19	CAP SCREW	ASTM A-193 Gr- B7	39	STUD	ASTM A-193 Gr. B7
20	TRUNNION PLATE	AISI 1045			

PRESSURE TEMPERATURE RATINGS



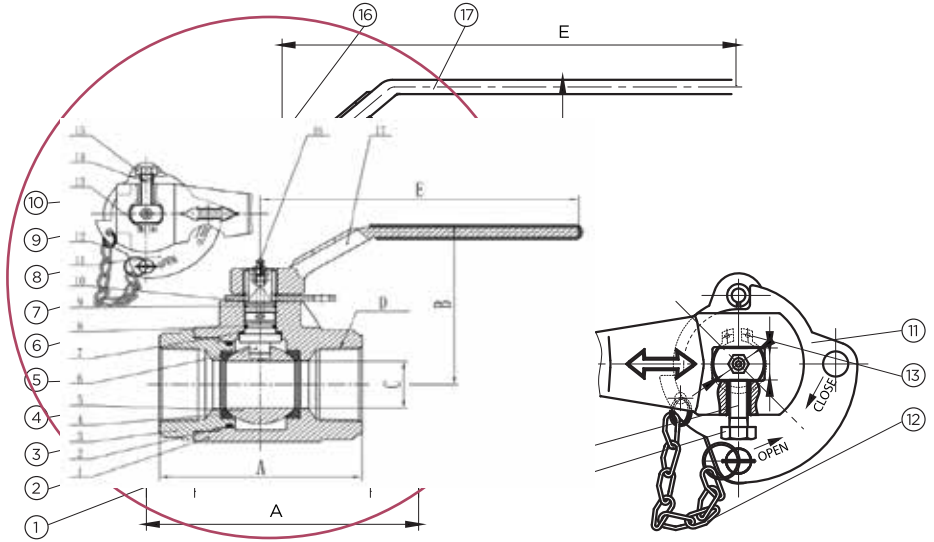
DIMENSIONS, WEIGHT & TORQUE

MODEL	SIZE	A	B	C	D	E	F	G	H	I	J	K	L	M	N	TORQUE (FT.LB)	WEIGHT (KG)
5612FT-12	4"	17.00	3.94	8.50	6.18	10.75	8-1.02	1.50	9.24	4-0.71	5.51	1.50	0.47	2.14	12.60	236.00	109.60
5612FT-14	6"	22.00	5.91	11.50	8.50	14.00	12-1.14	1.88	12.00	4-0.91	6.50	1.77	0.55	2.71	18.00	664.00	218.19
5612FT-15	8"	26.00	7.91	13.75	10.63	16.50	12-1.25	2.19	13.39	8-0.71	8.86	2.17	0.63	2.72	17.99	1300.00	370.00
5612FT-16	10"	31.00	10.00	17.01	12.76	20.00	16-1.38	2.56	16.97	8-0.71	10.00	2.56	0.79	3.13	31.50	1790.00	615.17
5612FT-17	12"	33.00	12.01	19.25	15.00	22.01	20-1.38	2.63	17.99	8-0.71	10.00	2.76	0.79	3.13	31.50	2425.00	1100.95

*DIMENSIONS ARE EXPRESSED IN INCHES

BCT SERIES

CARBON STEEL BODY 2 PC RP BALL VALVE



FEATURES

SIZE:	2"
PORT:	REDUCED
PRESSURE:	3000 & 5000 WOG
TEMPERATURE:	-200 TO 200° F
CONNECTION:	FEMALE NPT

TEST SPECIFICATION

TEST ACCORDANCE TO PER	API 598
NOMINAL PRESSURE:	3000 & 5000 PSI
SHELL TEST (WATER):	4500 & 7500 PSI
SEAT TEST (WATER):	3300 & 5500 PSI
AIR TEST:	116 PSI

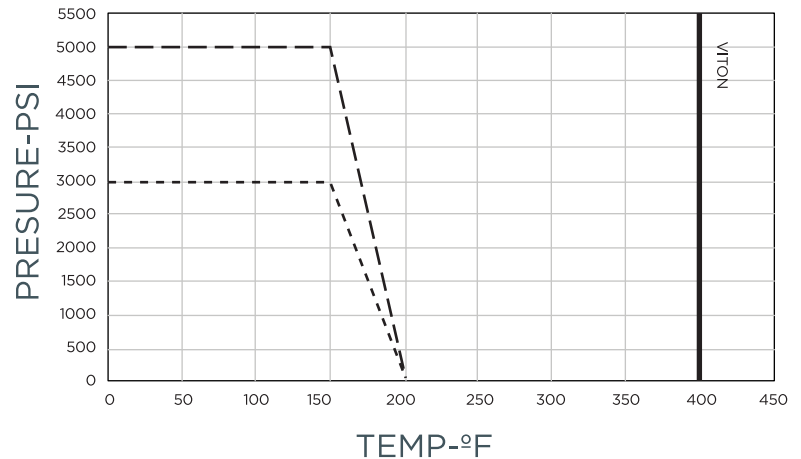
TECHNICAL SPECIFICATION

NPT THREADS AS PER	ASME B1.20.1
BLOW-OUT-PROOF STEM DESIGN	
IN COMPLIANCE WITH	NACE MR-0175
SUITABLE FOR	WATER, OIL & GAS

MATERIAL LIST

1	BODY	ASTM A-216 Gr. WCB
2	BODY SEAL	VITON
3	ADAPTER	ASTM A-216 Gr. WCB
4	SEAT	DELFIN
5	BALL	SS420
6	STEM	ASTM A-276 Gr. 420
7	THRUST BEARING	PTFE
8	FIRST STEM SEAL	VITON
9	SECOND STEM SEAL	VITON
10	STEM BEARING	PTFE
11	STOP PLATE	STEEL PLATE
12	PIN WITH CHAIN	STAINLESS STEEL
13	RETAINER RING	SPRING STEEL
14	STOP PIN	SPRING STEEL
15	HEXAGONAL BOLTS	CARBON STEEL
16	GREASE ZERK	CARBON STEEL
17	HANDLE	DUCTIL IRON

PRESSURE TEMPERATURE RATINGS



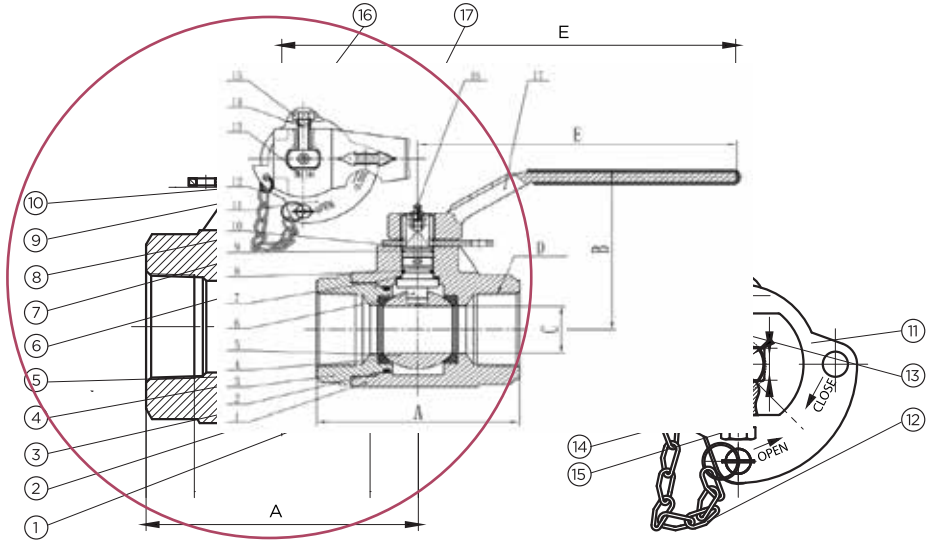
DIMENSIONS, WEIGHT & TORQUE

MODEL	SIZE	A	B	C	D	E	TORQUE (IN.LB)	WEIGHT (KG)	PRESSURE (WOG)
BCT3-09	2"	5.51	5.53	1.50	11.5 NPT	10.00	1750.00	5.52	3000
BCT5-09	2"	5.51	5.12	2.05	8 NPT	10.00	2700.00	6.45	5000

*TORQUE IS REPRESENTED AT FULL RATED PRESSURE
*DIMENSIONES ARE EXPRESSED IN INCHES

BDT SERIES

2000 PSI DUCTILE IRON BODY 2 PC RP BALL VALVE



FEATURES

SIZE:	2" - 4"
PORT:	REDUCED
PRESSURE:	1000 & 2000 WOG
TEMPERATURE:	-49 TO 450 F°
CONNECTION:	FEMALE NPT

TEST SPECIFICATION

TEST ACCORDANCE TO PER	API 598
NOMINAL PRESSURE:	1000 & 2000 PSI
SHELL TEST (WATER):	1500 & 3000 PSI
SEAT TEST (WATER):	1100 & 2200 PSI
AIR TEST:	116 PSI

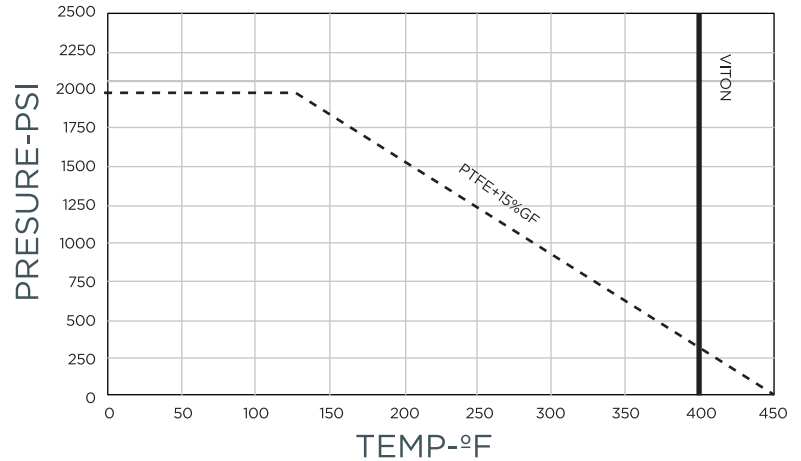
TECHNICAL SPECIFICATION

NPT THREADS AS PER	ASME B1.20.1
BLOW-OUT-PROOF STEM DESIGN	
IN COMPLIANCE WITH	NACE MR-0175
SUITABLE FOR	WATER, OIL & GAS

MATERIAL LIST

1	BODY	ASTM A-395 Gr. DI
2	BODY SEAL	VITON
3	ADAPTER	ASTM A-395 Gr. DI
4	SEAT	PTFE + 15% GLASS FILLED (RPTFE)
5	BALL	SS420
6	STEM	ASTM A-276 Gr. 420
7	THRUST BEARING	PTFE
8	FIRST STEM SEAL	VITON
9	SECOND STEM SEAL	VITON
10	STEM BEARING	PTFE
11	STOP PLATE	STEEL PLATE
12	PIN WITH CHAIN	STAINLESS STEEL
13	RETAINER RING	SPRING STEEL
14	STOP PIN	SPRING STEEL
15	HEXAGONAL BOLTS	CARBON STEEL
16	GREASE ZERK	CARBON STEEL
17	HANDLE	DUCTIL IRON

PRESSURE TEMPERATURE RATINGS



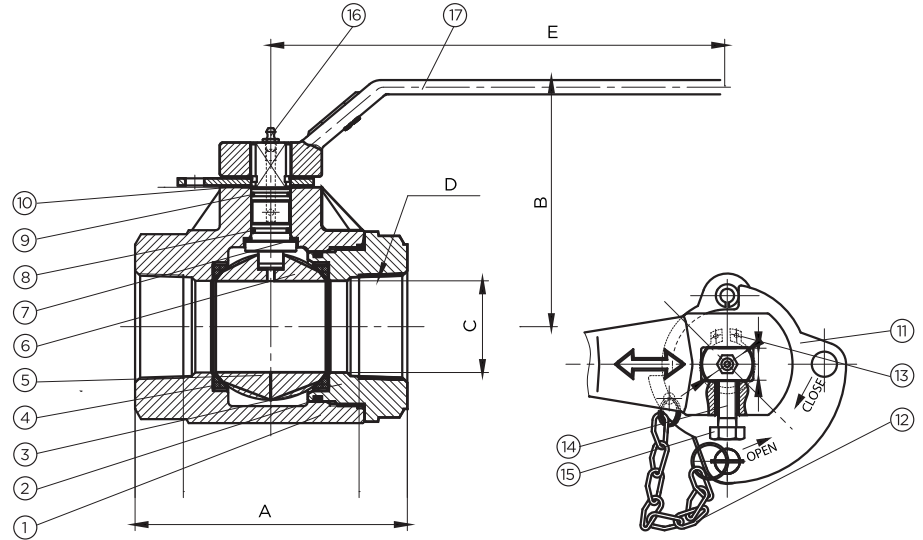
DIMENSIONS, WEIGHT & TORQUE

MODEL	SIZE	A	B	C	D	E	TORQUE (IN.LB)	WEIGHT (KG)	PRESSURE (WOG)
BDT2-09	2"	5.51	5.59	1.50	11.5 NPT	8.54	1200.00	5.13	2000
BDT2-11	3"	7.44	5.53	2.05	8 NPT	10.00	1625.00	8.83	2000 1000

*TORQUE IS REPRESENTED AT FULL RATED PRESSURE
*DIMENSIONES ARE EXPRESSED IN INCHES

BDT SERIES

2000 PSI DUCTILE IRON BODY 2 PC FP BALL VALVE



FEATURES

SIZE:	1"
PORT:	FULL
PRESSURE:	2000 WOG
TEMPERATURE:	-49 TO 450 F°
CONNECTION:	FEMALE NPT

TEST SPECIFICATION

TEST ACCORDANCE TO PER	API 598
NOMINAL PRESSURE:	2000 PSI
SHELL TEST (WATER):	3000 PSI
SEAT TEST (WATER):	2200 PSI
AIR TEST:	116 PSI

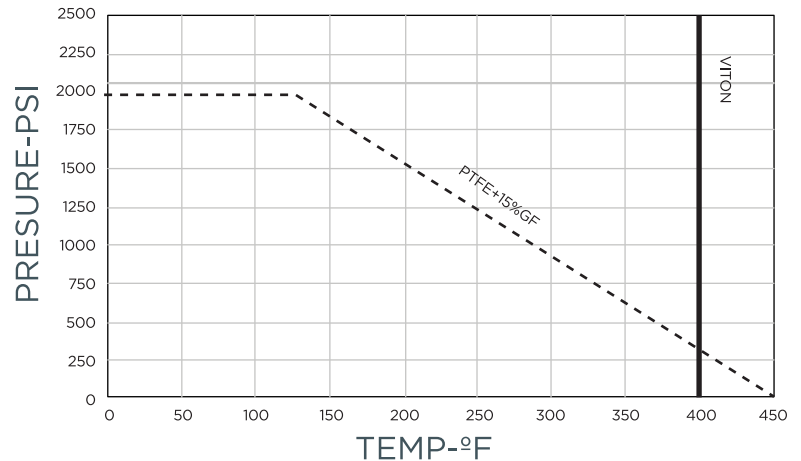
TECHNICAL SPECIFICATION

NPT THREADS AS PER	ASME B1.20.1
BLOW-OUT-PROOF STEM DESIGN	
IN COMPLIANCE WITH	NACE MR-0175
SUITABLE FOR	WATER, OIL & GAS

MATERIAL LIST

1	BODY	ASTM A-395 Gr. DI
2	BODY SEAL	VITON
3	ADAPTER	ASTM A-395 Gr. DI
4	SEAT	PTFE + 15% GLASS FILLED (RPTFE)
5	BALL	SS420
6	STEM	ASTM A-276 Gr. 420
7	THRUST BEARING	PTFE
8	FIRST STEM SEAL	VITON
9	SECOND STEM SEAL	VITON
10	STEM BEARING	PTFE
11	STOP PLATE	STEEL PLATE
12	PIN WITH CHAIN	STAINLESS STEEL
13	RETAINER RING	SPRING STEEL
14	STOP PIN	SPRING STEEL
15	HEXAGONAL BOLTS	CARBON STEEL
16	GREASE ZERK	CARBON STEEL
17	HANDLE	DUCTIL IRON

PRESSURE TEMPERATURE RATINGS



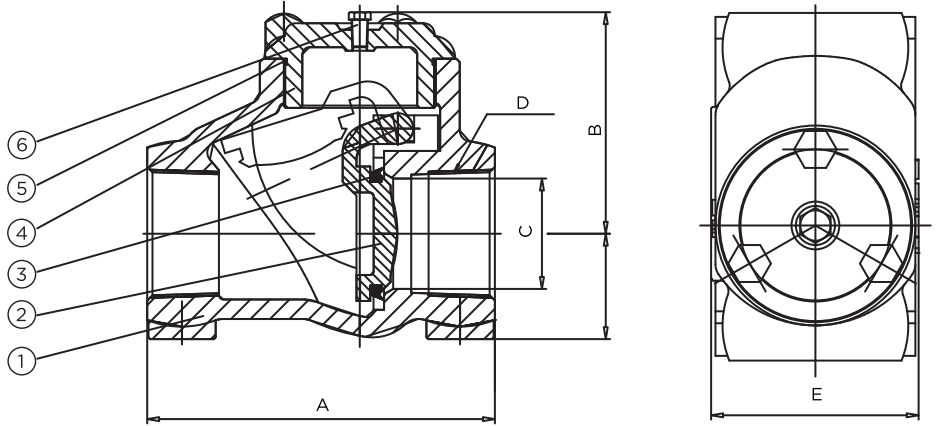
DIMENSIONS, WEIGHT & TORQUE

MODEL	SIZE	A	B	C	D	E	TORQUE (IN.LB)	WEIGHT (KG)
BDT2-06	1"	4.02	3.39	1.00	11.5 NPT	6.57	750.00	1.93

*TORQUE IS REPRESENTED AT FULL RATED PRESSURE
 *DIMENSIONES ARE EXPRESSED IN INCHES

CCT SERIES

CARBON STEEL BODY FULL PORT CHECK VALVE



FEATURES

SIZE:	1" - 2"
PORT:	FULL
PRESSURE:	3600 & 5000 WOG
TEMPERATURE:	0 TO 400° F
CONNECTION:	FEMALE NPT

TEST SPECIFICATION

TEST ACCORDANCE TO PER	API 598
NOMINAL PRESSURE:	3200 & 5000 PSI
SHELL TEST (WATER):	5400 & 7500 PSI
SEAT TEST (WATER):	4000 & 5500 PSI
AIR TEST:	116 PSI

TECHNICAL SPECIFICATION

NPT THREADS AS PER	ASME B1.20.1
FULL OPENING	
IN COMPLIANCE WITH	NACE MR-0175
SUITABLE FOR	WATER, OIL & GAS

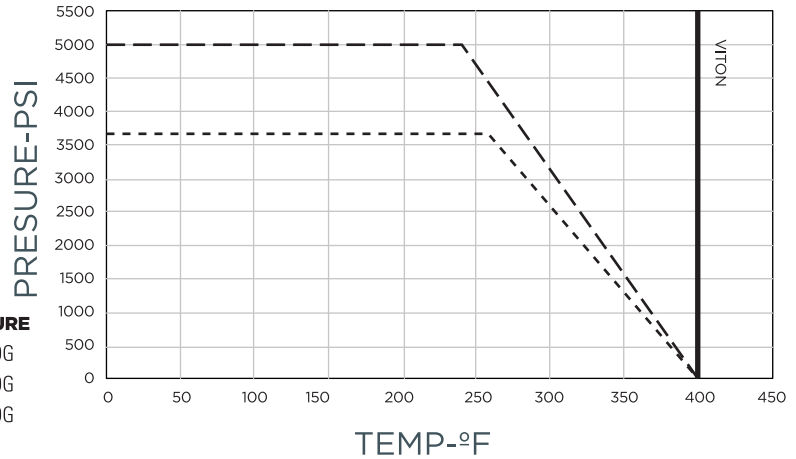
MATERIAL LIST

1	BODY	ASTM A-216 Gr. WCB
2	DISC	ASTM A-351 Gr. CF8M
3	SEAL	VITON
4	BONNET	ASTM A-216 Gr. WCB
5	O-RING	VITON
6	BONNET SCREW	CARBON STEEL

DIMENSIONS, WEIGHT & TORQUE

MODEL	SIZE	A	B	C	D	E	WEIGHT (KG)	PRESSURE
CCT3-06	1"	4.72	3.07	1.00	11.5 NPT	-	2.38	3600 WOG
CCT3-09	2"	6.30	4.06	2.00	11.5 NPT	-	5.53	3600 WOG
CCT5-09	2"	6.30	4.06	2.05	11.5 NPT	-	6.31	5000 WOG

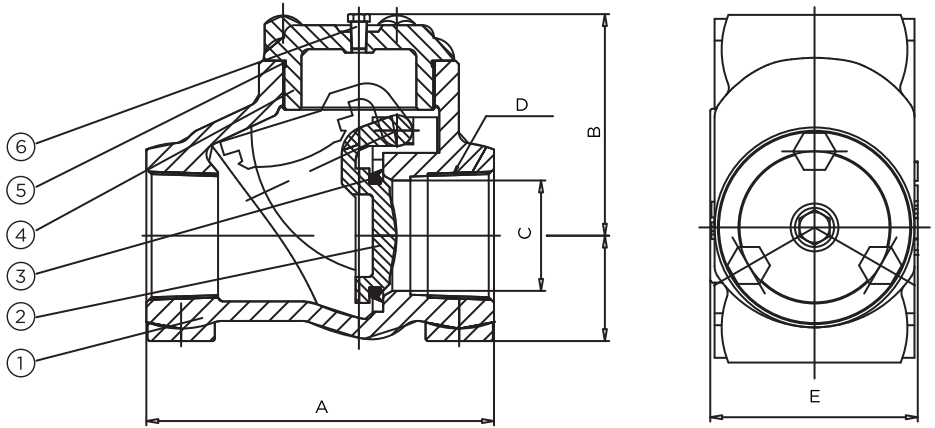
PRESSURE TEMPERATURE RATINGS



*TORQUE IS REPRESENTED AT FULL RATED PRESSURE
*DIMENSIONES ARE EXPRESSED IN INCHES

CDT SERIES

2000 PSI DUCTILE IRON BODY FULL PORT CHECK VALVE



FEATURES

SIZE:	1" - 4"
PORT:	FULL
PRESSURE:	2000 WOG
TEMPERATURE:	0 TO 400° F
CONNECTION:	FEMALE NPT

TEST SPECIFICATION

TEST ACCORDANCE TO PER	API 598
NOMINAL PRESSURE:	2000 PSI
SHELL TEST (WATER):	3000 PSI
SEAT TEST (WATER):	2200 PSI
AIR TEST:	116 PSI

TECHNICAL SPECIFICATION

NPT THREADS AS PER	ASME B1.20.1
FULL OPENING	
IN COMPLIANCE WITH	NACE MR-0175
SUITABLE FOR	WATER, OIL & GAS

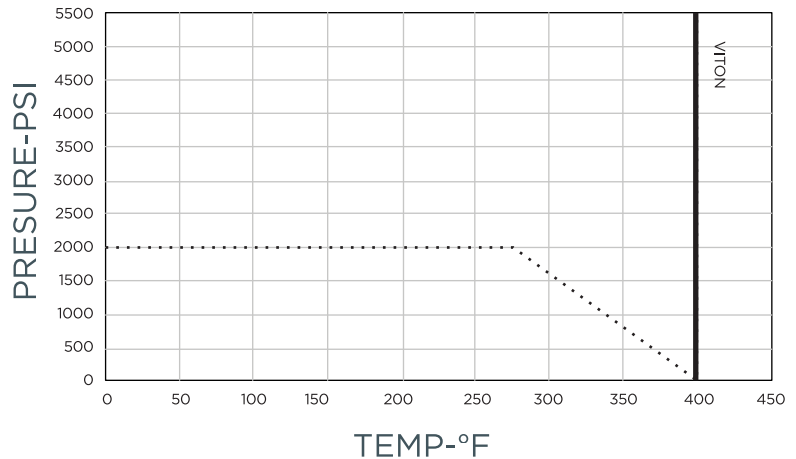
MATERIAL LIST

1	BODY	ASTM A-395 Gr. DI
2	DISC	ASTM A-351 Gr. CF8M
3	SEAL	VITON
4	BONNET	ASTM A-395 Gr. DI
5	O-RING	VITON
6	BONNET SCREW	CARBON STEEL

DIMENSIONS, WEIGHT & TORQUE

MODEL	SIZE	A	B	C	D	E	WEIGHT (KG)
CDT2-06	1"	4.72	3.23	1.00	11.5 NPT	-	2.66
CDT2-09	2"	6.30	4.09	2.00	11.5 NPT		5.51
CDT2-11	3"	8.25	5.00	3.00	8 NPT		10.21
CDT2-12	4"	10.00	8.00	4.00	8 NPT		26.24

PRESSURE TEMPERATURE RATINGS



*TORQUE IS REPRESENTED AT FULL RATED PRESSURE
*DIMENSIONES ARE EXPRESSED IN INCHES